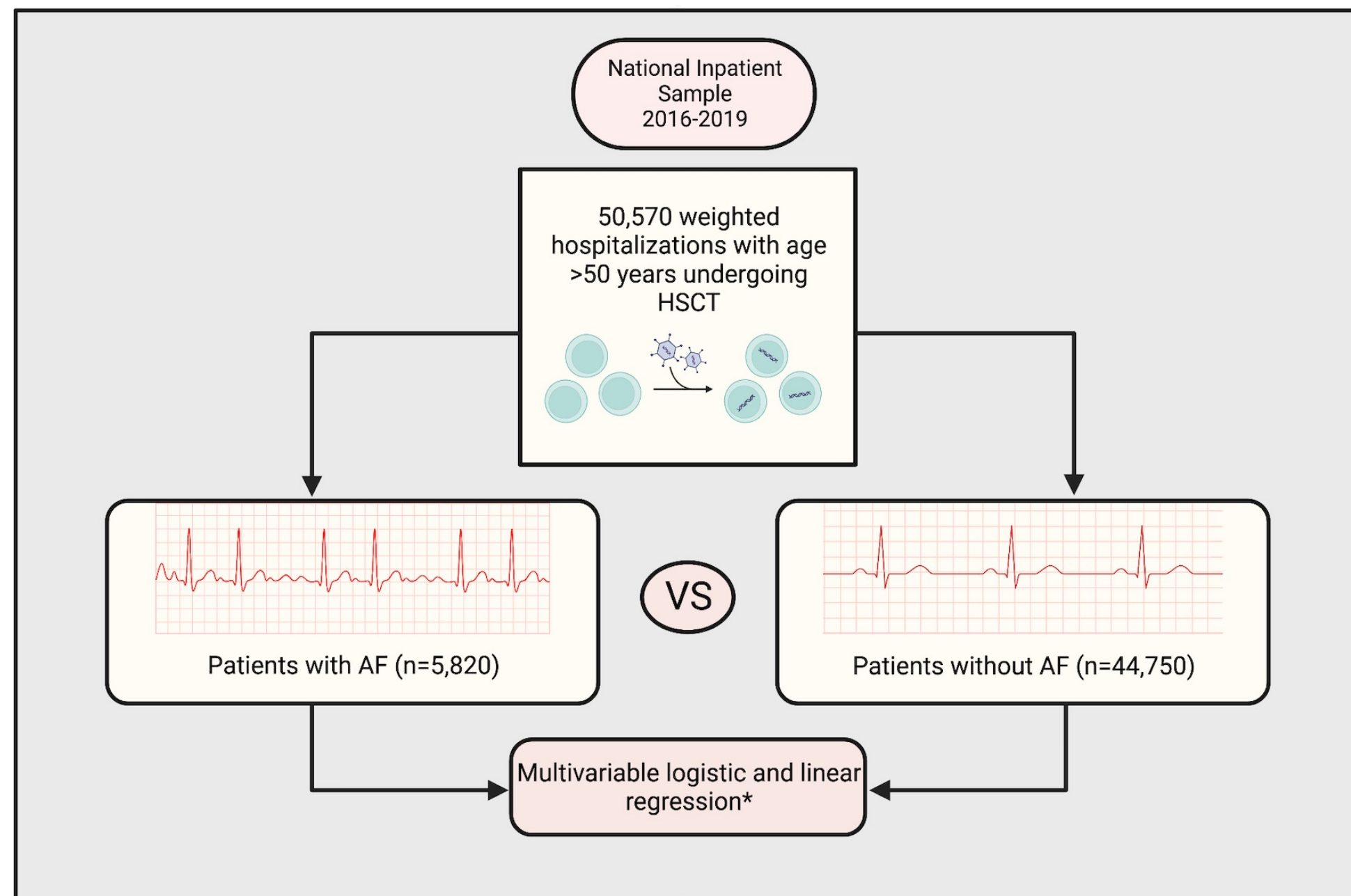


# Association of Atrial Fibrillation with Outcomes in Patients undergoing Bone Marrow Transplantation: A Nationwide Analysis

Satyam Krishan, MD; Jehanzeb Khan, MD; Siddharth Agarwal, MD; Jagjit Khosla, MD; Sohrab Singh, MD; Sachin Saju, MD; Islam Shatla, MD; Sreeram Yalamanchili, MD; Sahith Reddy Thotamgari, MD; Mohamad Khattab, DO; Muhammad Bilal Munir, MD; Zain Ul Abideen Asad, MD

## METHODS AND RESULTS:



### Outcomes in Patients with AF vs without AF:

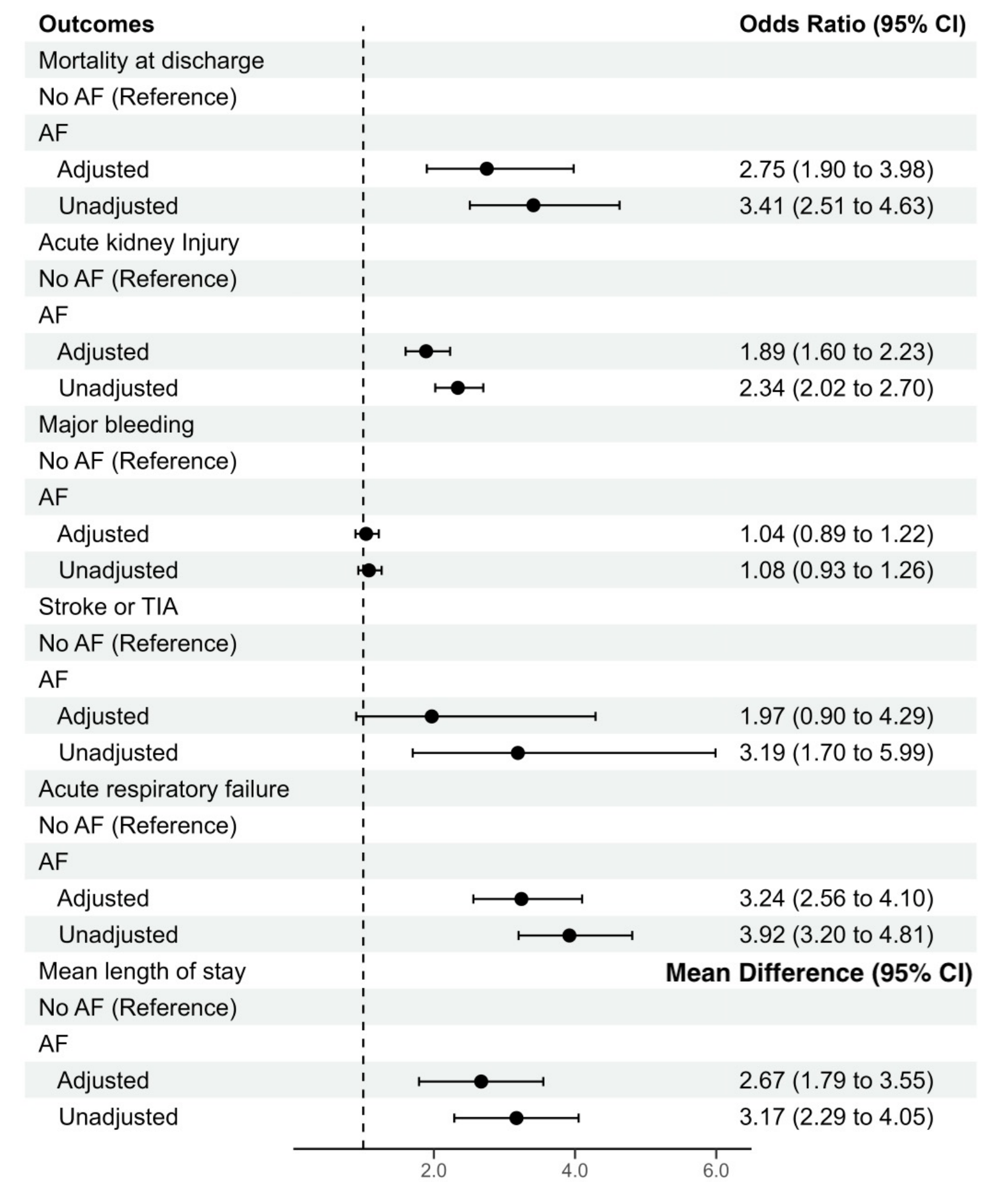
Inpatient Mortality (aOR 2.75; 1.9-3.98; p<0.001)	Cardiogenic Shock (aOR 7.73; 3.17-18.8; p<0.001)
Cardiac arrest (aOR 2.86; 1.55-5.26; p=0.001)	Acute Respiratory Failure (aOR 3.24; 2.56-4.1; p<0.001)
Acute Kidney Injury (aOR 1.89; 1.6-2.23; p<0.001)	Length of stay (+2.67; 1.79-3.55; p<0.001)
Acute HF exacerbation (aOR 5.01; 3.54-7.1; p<0.001)	Cost of Care (+\$67,529; 36,630-98,427; p<0.001)

\*logistic and linear regression analysis adjusted for age, female sex, race, insurance status, median household income, hypertension, diabetes, coronary artery disease, peripheral artery disease, chronic heart failure, chronic obstructive pulmonary disease, chronic kidney disease, obesity, cirrhosis, anemia, coagulopathy, drug or alcohol use and metastatic disease



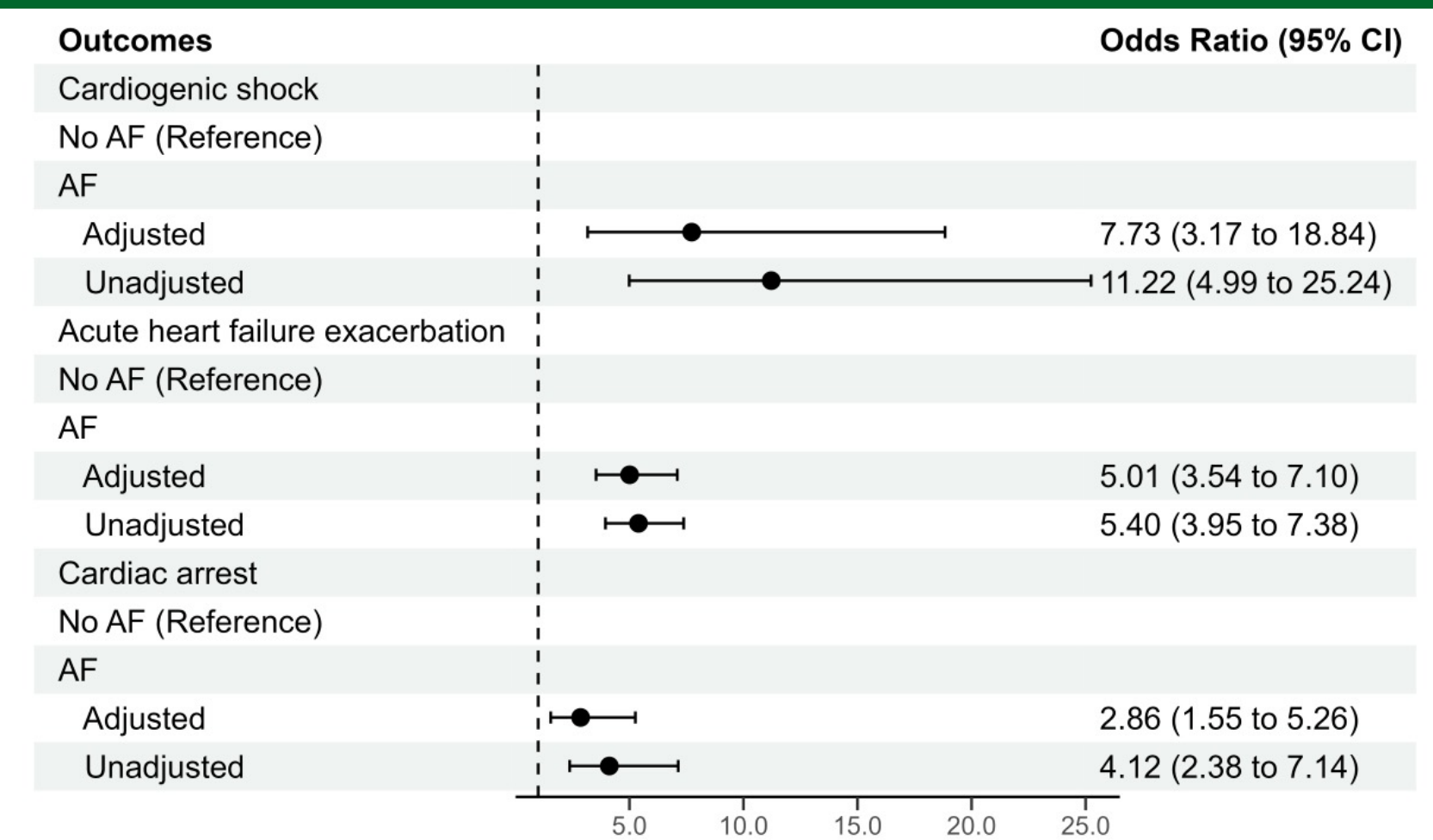
In patients undergoing bone marrow transplantation, AF is associated with worse in-hospital outcomes and higher resource utilization as compared to those without AF

FIGURE 1



Adjusted and unadjusted association of AF with in-hospital clinical outcomes including inpatient mortality, acute kidney injury, major bleeding, stroke/TIA acute respiratory failure, and mean length of stay

FIGURE 2



Adjusted and unadjusted association of AF with in-hospital cardiovascular outcomes including cardiogenic shock, acute heart failure exacerbation and cardiac arrest

## DISCLOSURE INFORMATION

The authors have no conflicts of interests or industry relationships to disclose.



Scan the QR code and follow us on twitter!  
@SatyamKrishan1  
@ZainAsadEP

Email:  
Satyam-Krishan@ouhsc.edu

